

# Tuba - Multi-Octave Melodic Minor Scales

## Difficult Keys

www.TubaPeter.com

F# minor



4



8

G# minor (sounds like Ab minor)



12



17

Ab minor



21

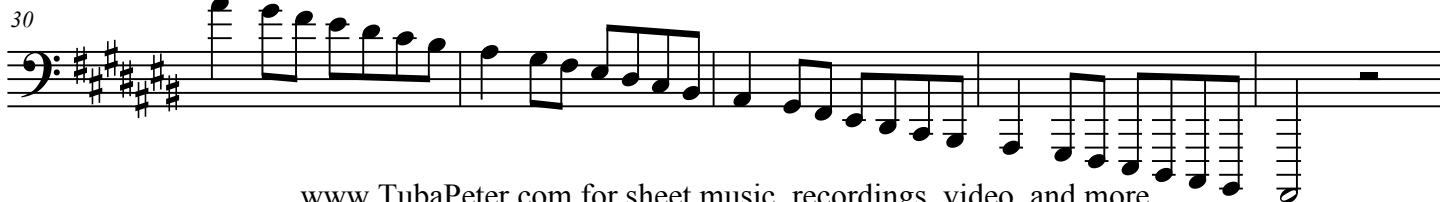


26

A# minor (sounds like Bb minor)



30



35 B minor

Musical notation for the B minor scale, measures 35-37. The scale is written in bass clef with a key signature of two sharps (F# and C#). The notes are: B2, C3, D3, E3, F#3, G3, A3, B3, C4, D4, E4, F#4, G4, A4, B4.

38

Musical notation for the B minor scale, measures 38-41. The scale is written in bass clef with a key signature of two sharps (F# and C#). The notes are: C4, D4, E4, F#4, G4, A4, B4, C5, B4, A4, G4, F#4, E4, D4, C4.

42 C# minor

Musical notation for the C# minor scale, measures 42-44. The scale is written in bass clef with a key signature of three sharps (F#, C#, G#). The notes are: C#3, D#3, E#3, F#3, G#3, A#3, B#3, C#4, D#4, E#4, F#4, G#4, A#4, B#4, C#5.

45

Musical notation for the C# minor scale, measures 45-48. The scale is written in bass clef with a key signature of three sharps (F#, C#, G#). The notes are: C#4, D#4, E#4, F#4, G#4, A#4, B#4, C#5, B#4, A#4, G#4, F#4, E#4, D#4, C#4.

49 D# minor (sounds like Eb minor)

Musical notation for the D# minor scale, measures 49-51. The scale is written in bass clef with a key signature of four sharps (F#, C#, G#, D#). The notes are: D#3, E#3, F#3, G#3, A#3, B#3, C#4, D#4, E#4, F#4, G#4, A#4, B#4, C#5, D#5. Some notes have an 'x' mark above them.

52

Musical notation for the D# minor scale, measures 52-55. The scale is written in bass clef with a key signature of four sharps (F#, C#, G#, D#). The notes are: D#4, E#4, F#4, G#4, A#4, B#4, C#5, D#5, C#5, B#4, A#4, G#4, F#4, E#4, D#4.

56 Eb minor

Musical notation for the Eb minor scale, measures 56-58. The scale is written in bass clef with a key signature of three flats (Bb, Eb, Ab). The notes are: Eb3, Fb3, Gb3, Ab3, Bb3, Cb4, Eb4, Fb4, Gb4, Ab4, Bb4, Cb5, Eb5.

59

Musical notation for the Eb minor scale, measures 59-62. The scale is written in bass clef with a key signature of three flats (Bb, Eb, Ab). The notes are: Eb4, Fb4, Gb4, Ab4, Bb4, Cb5, Eb5, Db5, Cb5, Bb4, Ab4, Gb4, Fb4, Eb4.